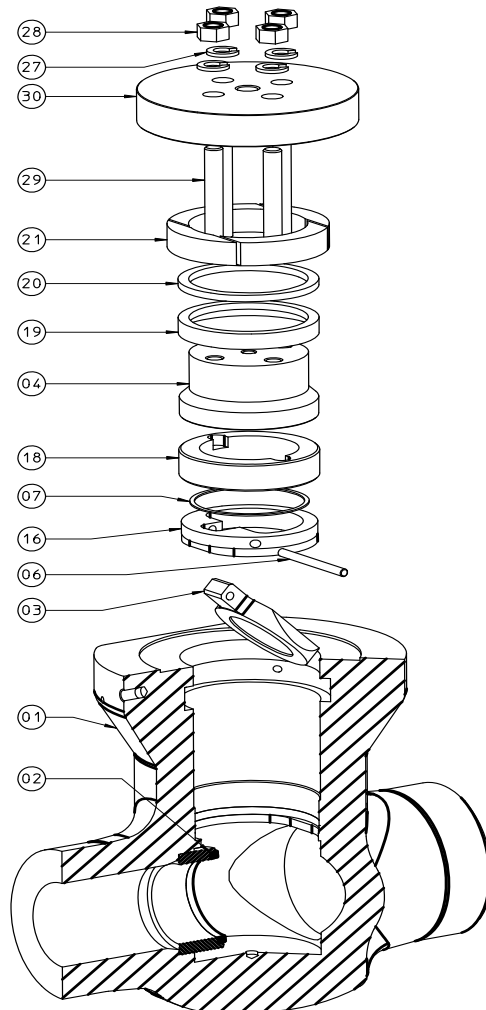


**DISASSEMBLY & ASSEMBLY SWING CHECK VALVE**  
3" - 4" 1500-2500 LBS.



1. Caution, before any attempt is made to disassemble, verify that the valve is sufficiently cooled down, depressurised, isolated from system pressure and secured against accidental pressurisation.
2. Unscrew the nuts (28) from the retaining plate (30) and remove the spring washers (27) and the retaining plate (30).
3. Lower the bonnet (04) into the valve body (01) and remove the segmental ring (21), by tapping a punch tool through the designated disassembly holes provided in the bonnet area of the valve body (01).
4. Remove the gasket ring (20), gasket (19) and the bonnet (04) from the valve body (01).
5. Unscrew the lock ring (18) from the valve body (01) using the special removal tool.
6. Remove the gasket (07) and the disc holder (16).
7. Remove the disc (03) out of the disc holder (16) by pressing out the disc pin (06).

INSPECTION PRIOR TO RE-ASSEMBLY

1. Thoroughly clean all parts with solvent and a clean cloth.
2. Examine the following parts signs of damage, i.e. pitting, erosion or scratches:
  - A. SEAT (02) - Sealing surface
  - B. DISC (03) - Sealing surface
  - C. BONNET (04) - Sealing surface
3. Lubricate all threaded parts with high temperature grease, i.e. Molykote HSC.
4. Place the disc (03) into the disc holder (16) and secure it with the disc-pin (06).
5. Insert the disc assembly (16) into the valve body (01) whilst aligning both flat surfaces located at the disc assembly (16) and valve body (01).
6. Place the gasket (07) and secure the disc assembly (16) with the lock ring (18) using the special tool.
7. Apply a thin film of Molykote D321 R to the sealing surface of the **NEW** gasket (19) and bonnet (04).
8. Insert the bonnet (04), gasket (19) and gasket ring (20) into the valve body (01).
11. Place the segmental ring (21) into the valve body (01). Make sure the segments are located at such place, there is a segment placed in front of each disassembly hole.
12. Insert the bolts (29) through the retaining ring (30). Place the retaining ring (30) on top of the valve body (01). Screw the bolts (29) into the bonnet (04) and place the spring washers (27) and nuts (28). Now tighten the nuts (28) to force the bonnet (04) into the gasket (19).
9. Pressurise the system and check the bonnet.
10. In case leakage of the bonnet (04) is observed, tighten the nuts (28).
11. The valve is now ready for use.

